



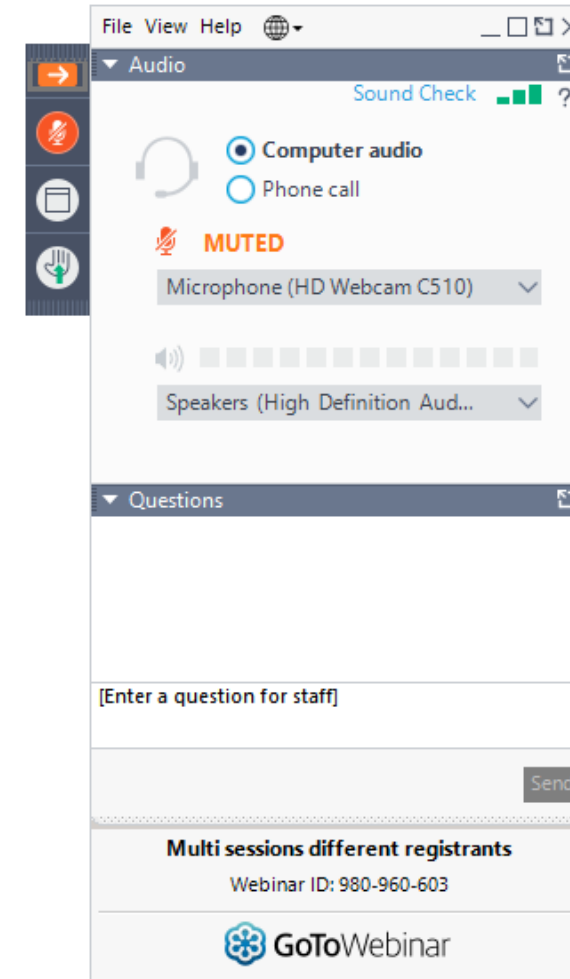
# Optimise the Easy Way with SolarEdge Smart Panels

August 2020

solar**edge**

# Webinar Information

- Audio: PC or phone
- Participants on **mute**
- Submit questions
- Certificate & Recording



# Presenter



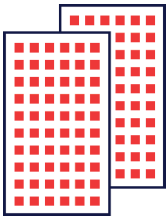
## Brent Heber

Residential Account Manager  
NSW & ACT

# What Are We Going to Talk About?



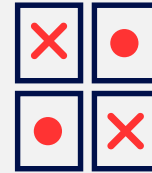
SolarEdge benefits



New smart panel



Meet our new Mapper



Online game



Addendum

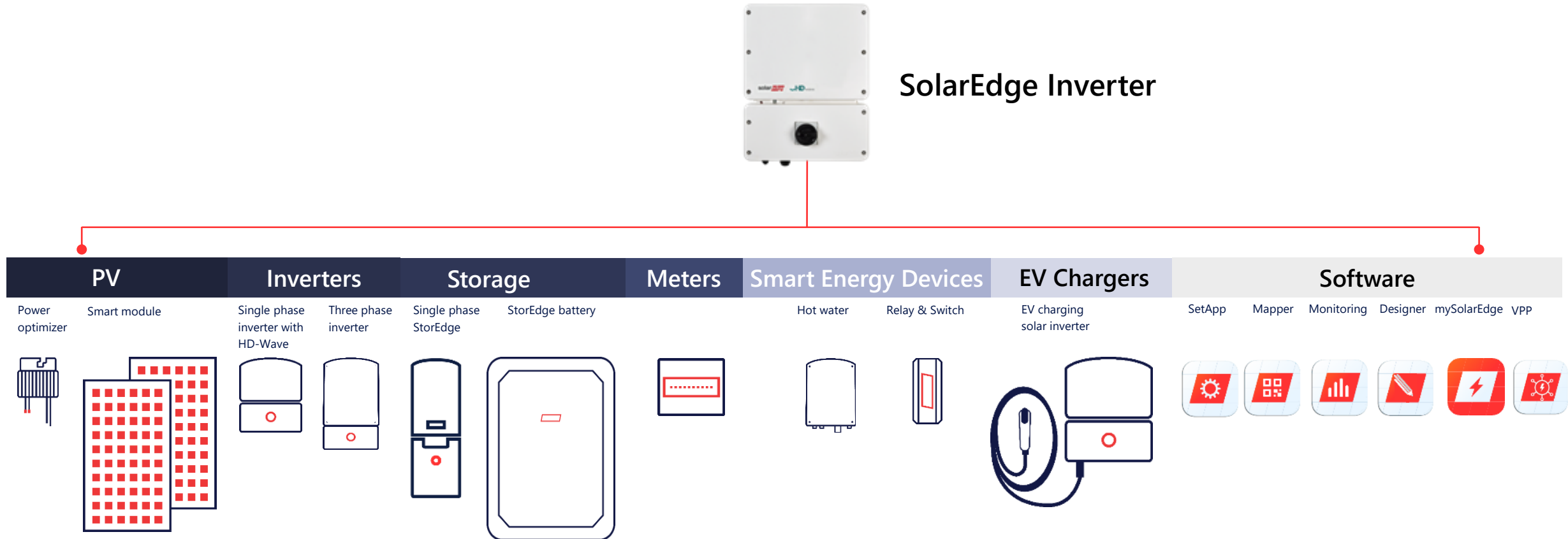


# SolarEdge Products & Benefits

# Complete Energy Solution – from PV to Grid



SolarEdge Inverter



# New Smart Panels

## Get the Edge



# Smart Panel

## We Know PV

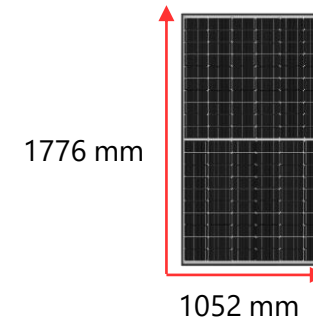
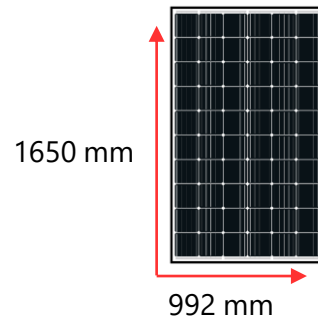
- ▀ 50 million reasons
- ▀ Our seal of approval
- ▀ In-house quality control
- ▀ Tier 1 listed manufacturer





# Expanding the Range

	Current Offering	NEW Offering
	60-Cell Mono PERC	60 Split-cell Cell Mono PERC



Technical specifications	<ul style="list-style-type: none"> <li>▄ Black frame</li> <li>▄ PERC technology</li> <li>▄ Integrated power optimiser</li> <li>▄ 60 cells</li> </ul>	<ul style="list-style-type: none"> <li>▄ Black frame</li> <li>▄ PERC technology</li> <li>▄ Integrated power optimiser</li> <li>▄ Split-cell technology – 120 cells</li> <li>▄ Improved cable management</li> </ul>
Power rating	300W, 310W	360W, 365W
Product warranty	12 years	

Performance warranty

25-year guarantee based on a standard linear degradation

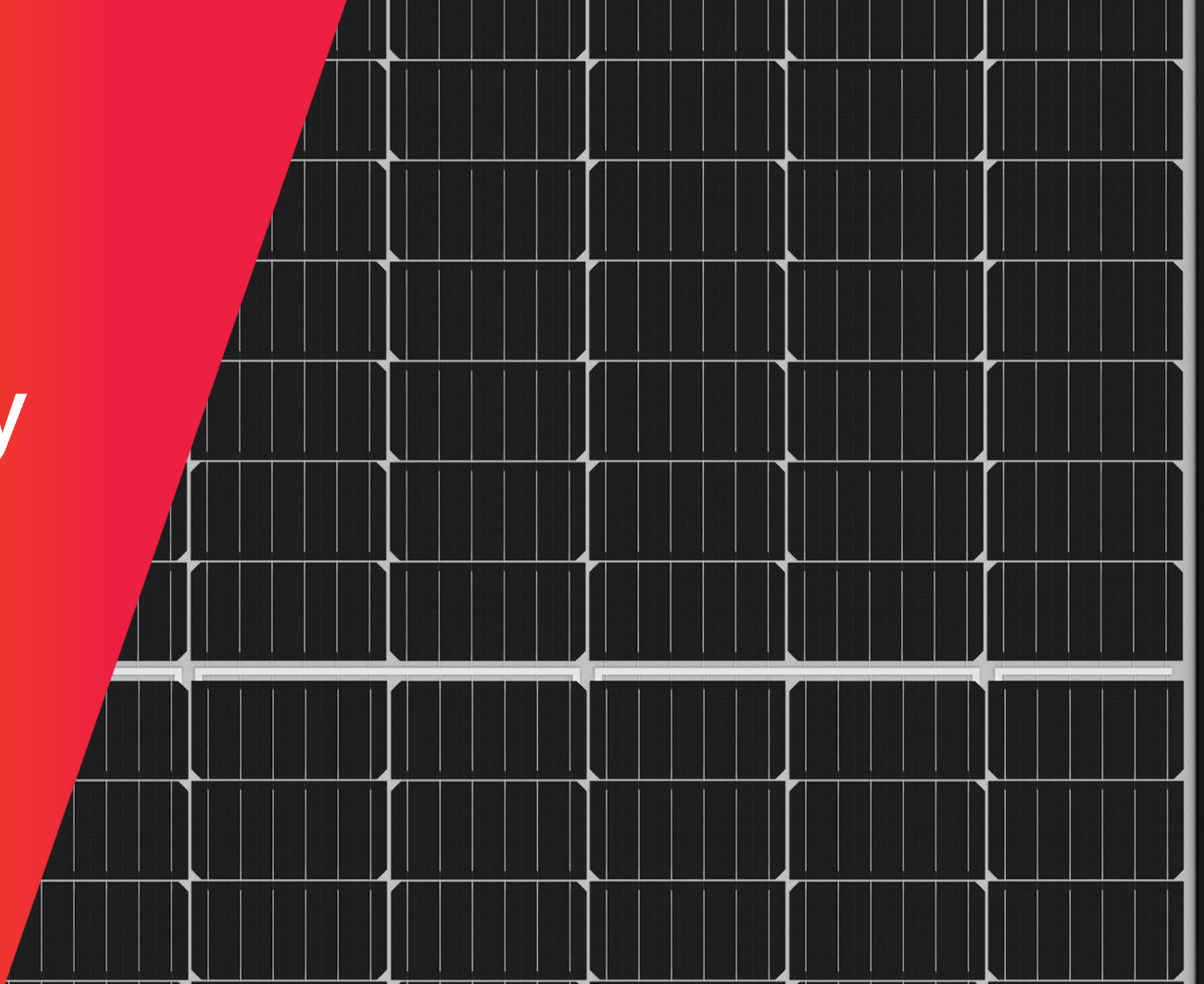
# PERC Technology



# Fantastic Performance Warranty



# Split-Cell Technology





**Let's Talk  
About  
Installation!**

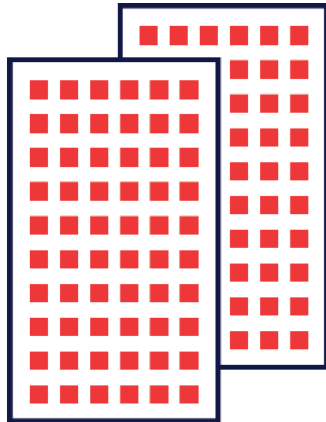
# Onsite Installation

Do you still  
do this?



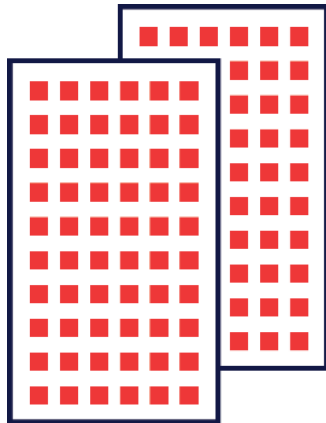
# There Is a Better Way!

## Smart Panels



# There Is a Better Way!

Smart Panels



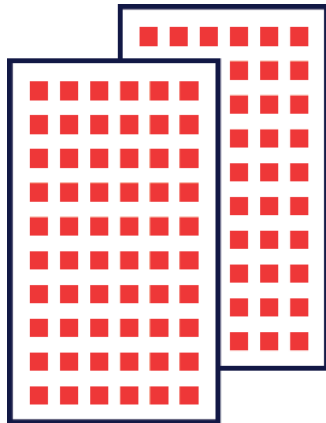
Designer





# There Is a Better Way!

## Smart Panels



## Designer



## Mapper



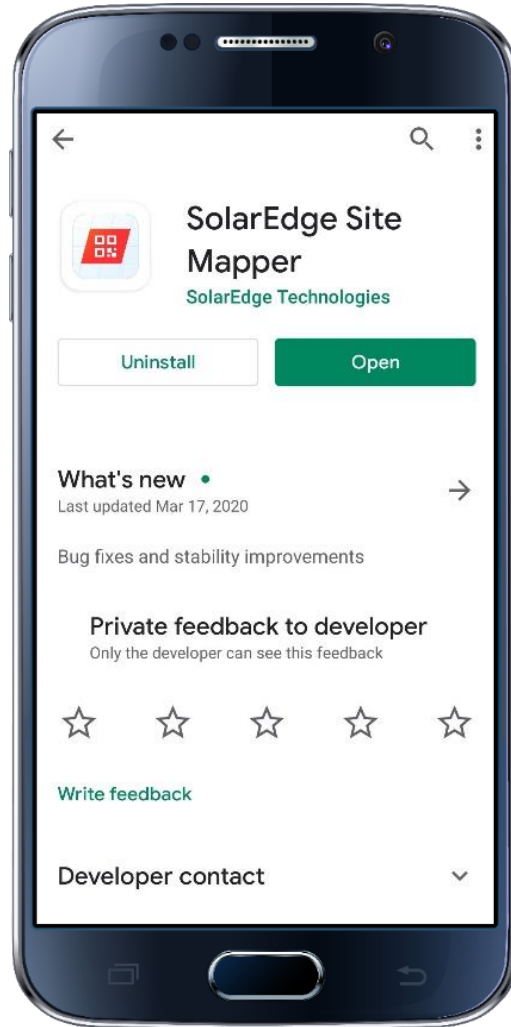


# SolarEdge Mapper App Overview

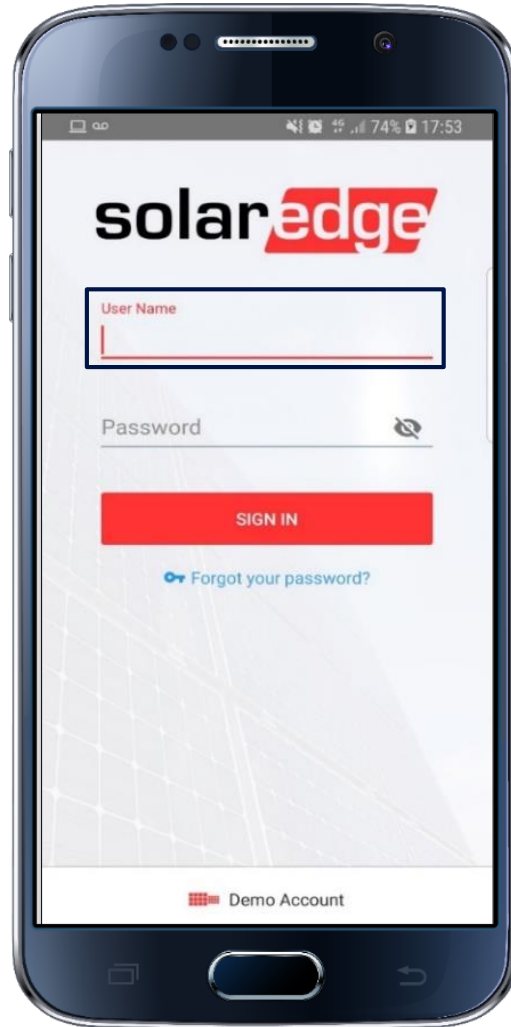
# Downloading the Mapper App

 iOS App store

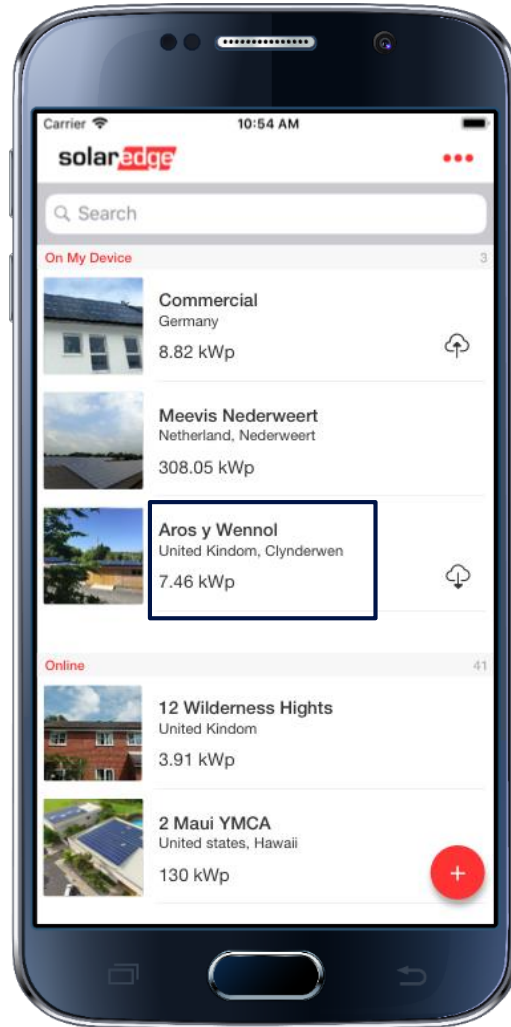
 Google Play store



# Mapper App Login



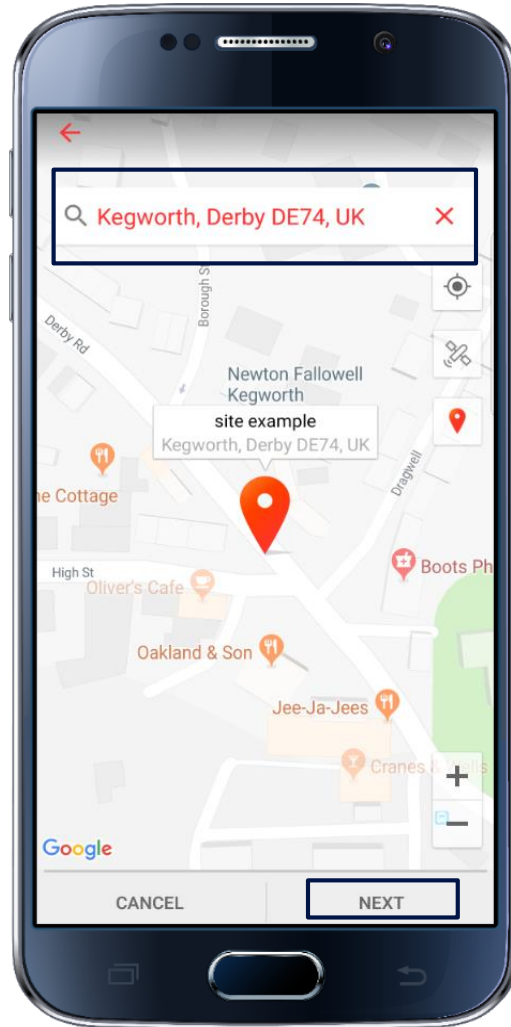
# Site List



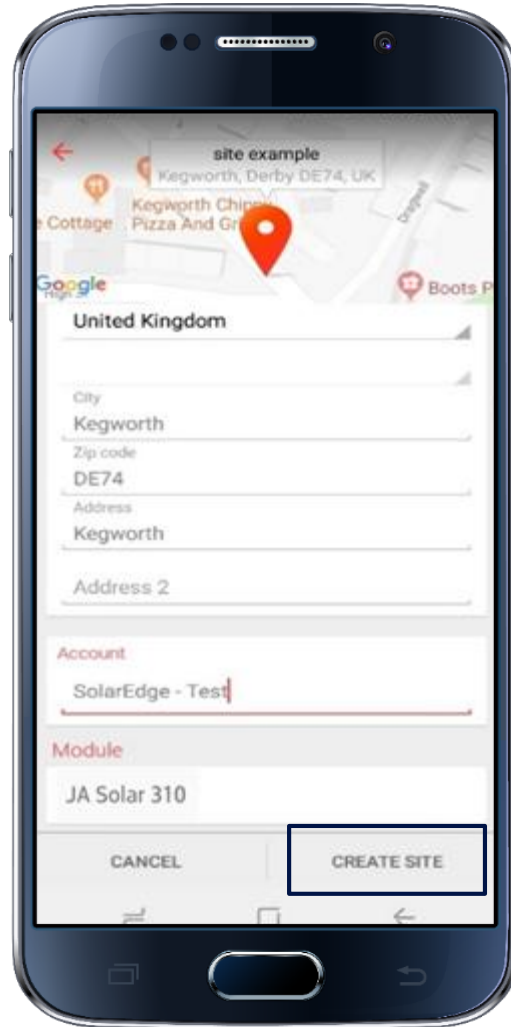
# Making Your Site: Site Details



# Making Your Site: Site Location



# Making Your Site: Panel Type

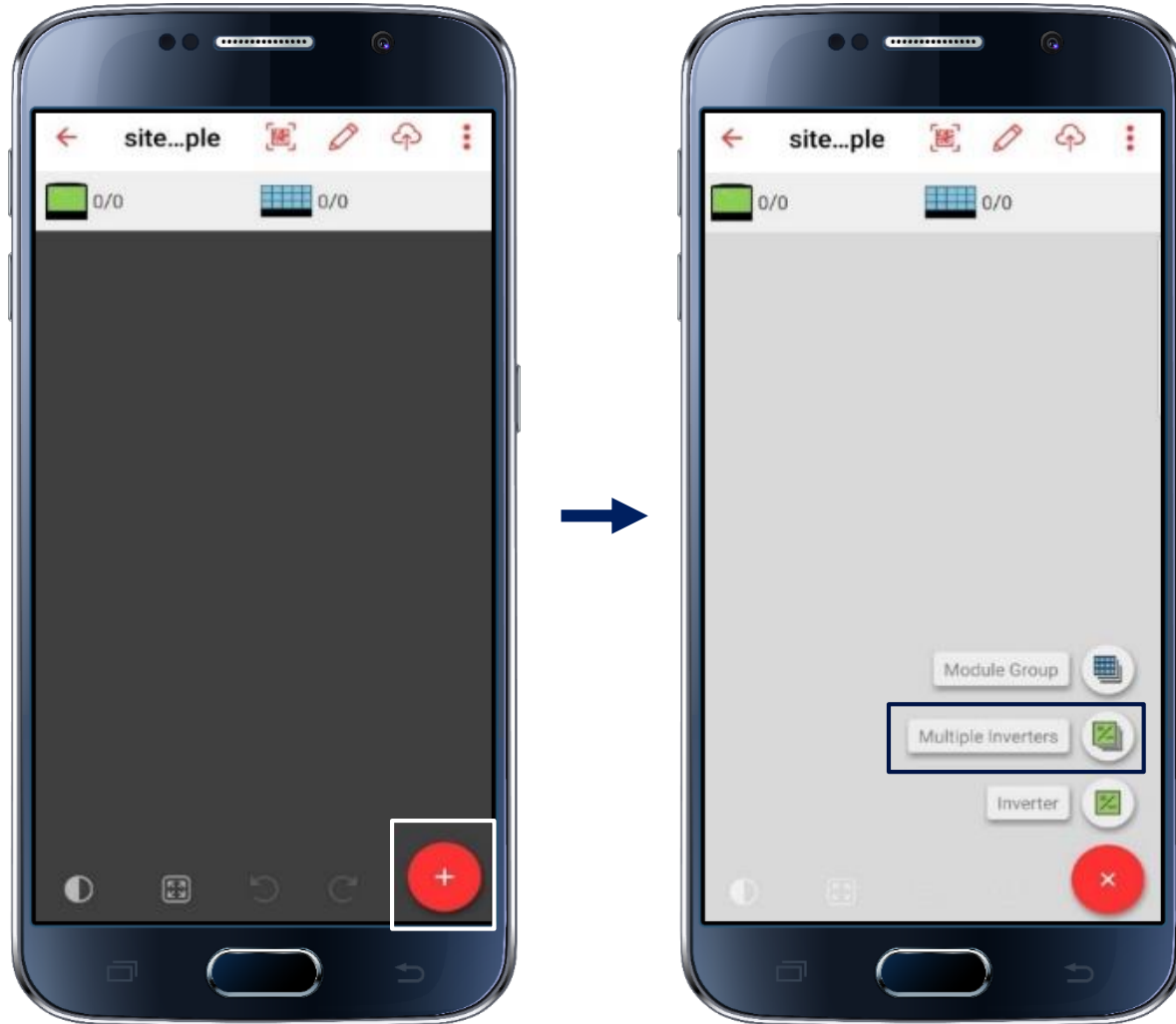




# Making Your Site: Adding Inverters to the Layout



# Making Your Site: Adding Inverters to the Layout



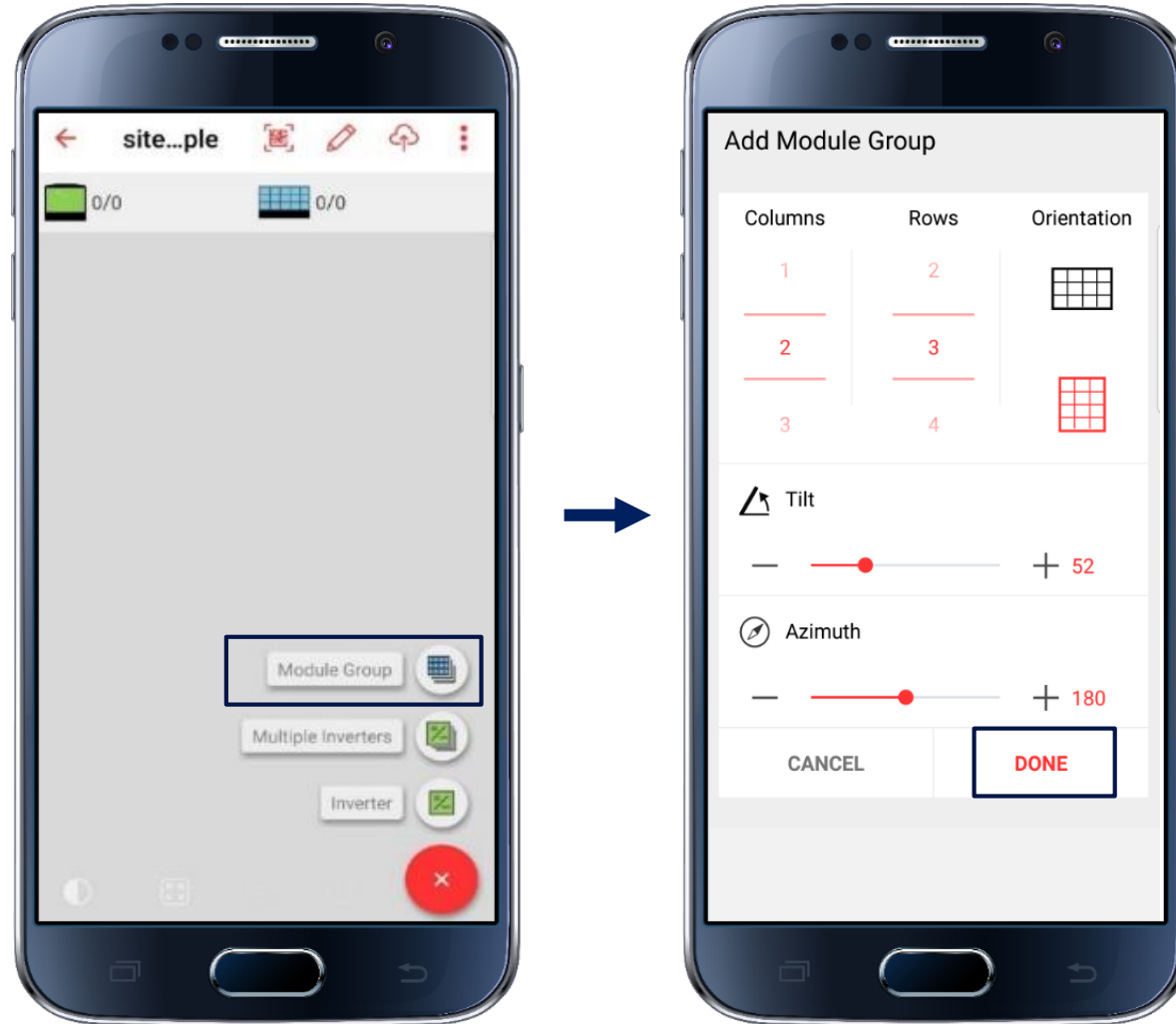
# Making Your Site: Adding Inverters to the Layout



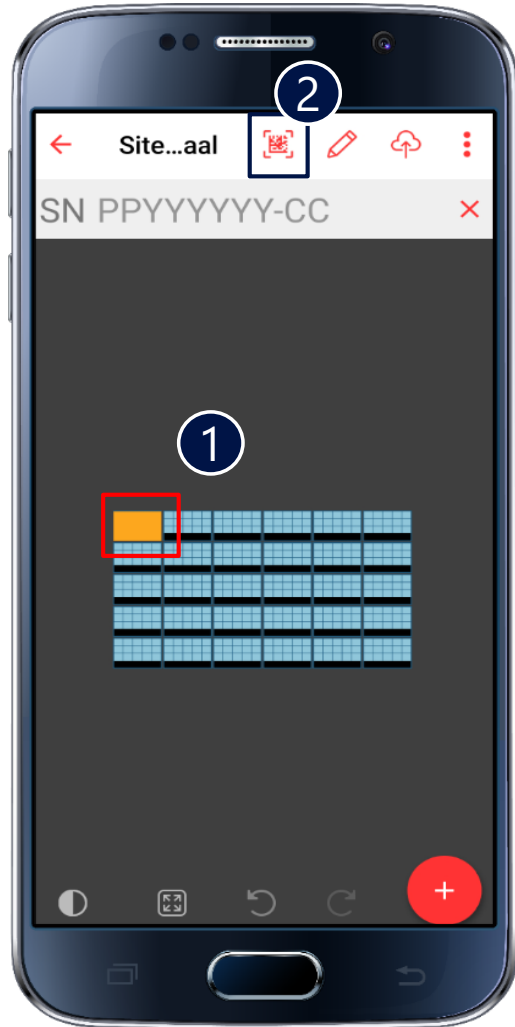
# Making Your Site: Adding Panels to the Layout



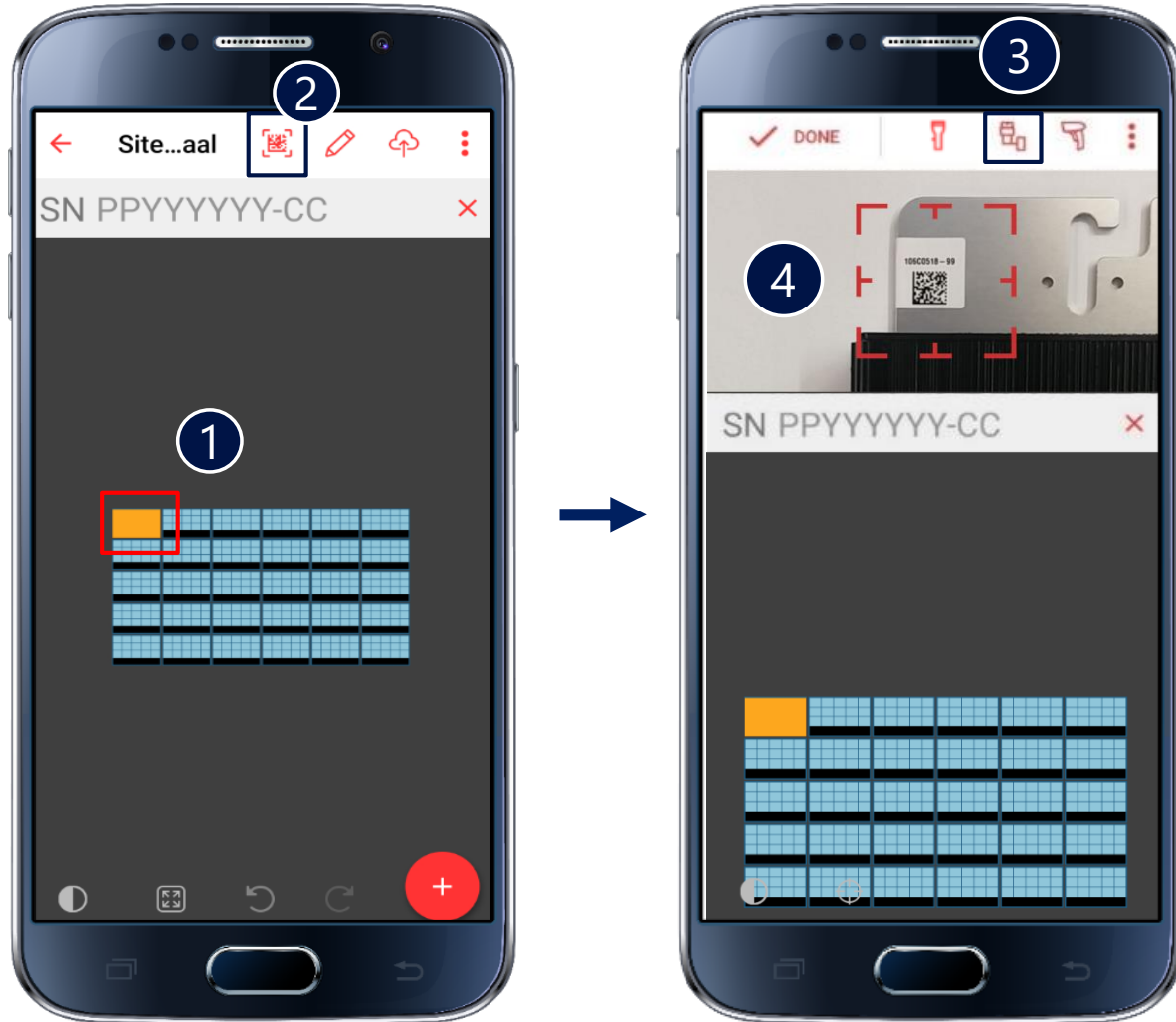
# Making Your Site: Adding Panels to the Layout



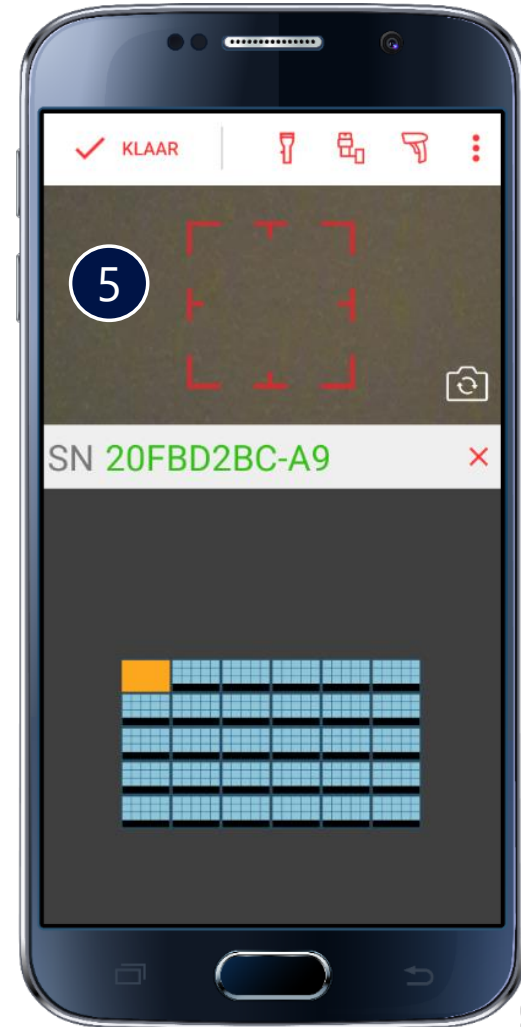
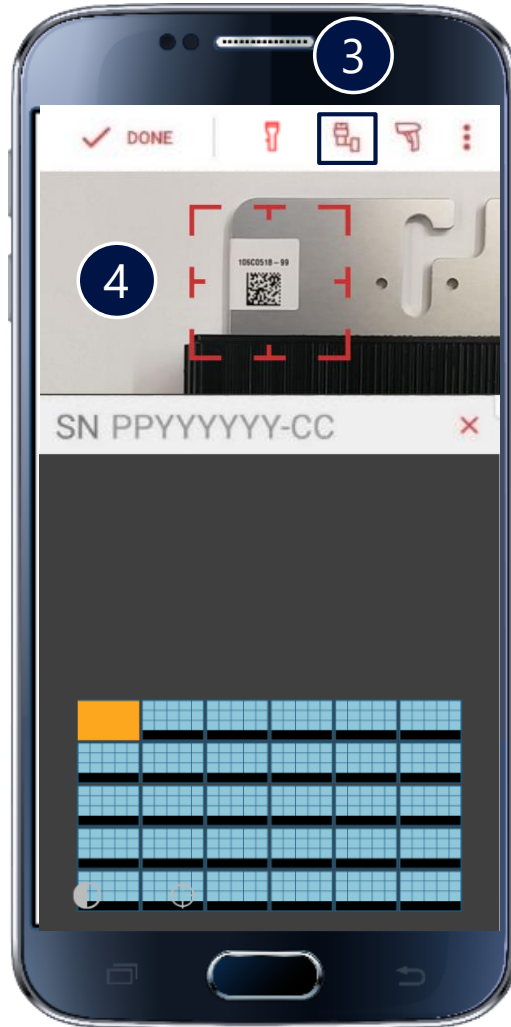
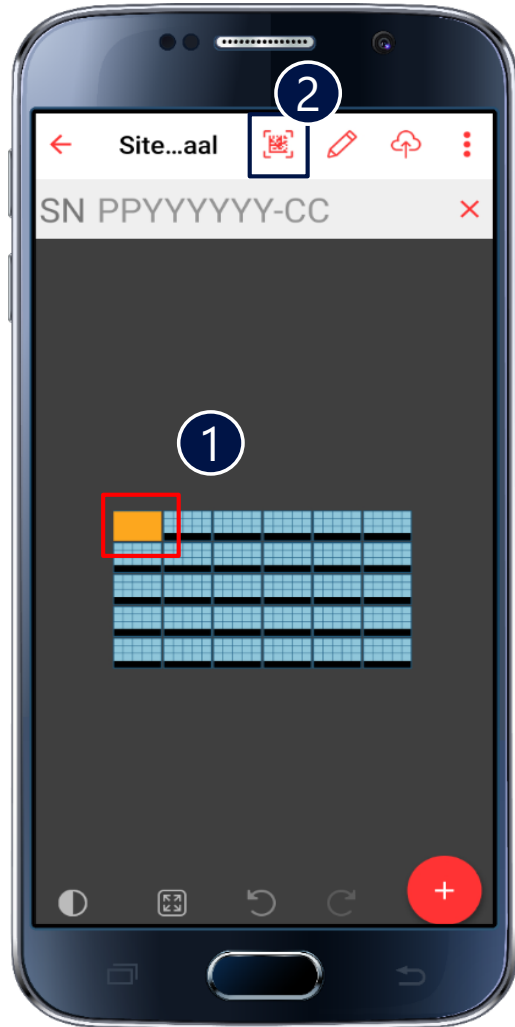
# Scanning the Barcodes



# Scanning the Barcodes

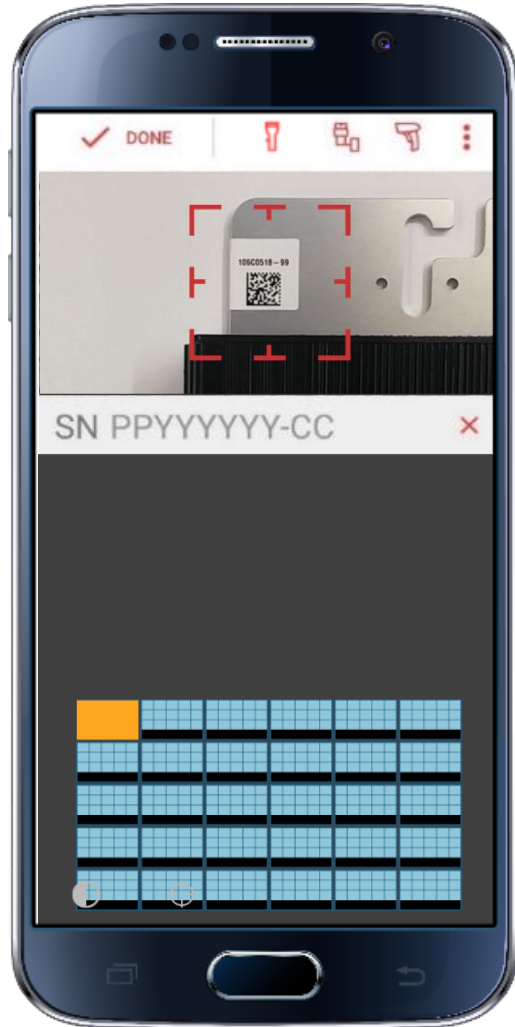


# Scanning the Barcodes





# Scanning SolarEdge Smart Panels



# Saving Your Work



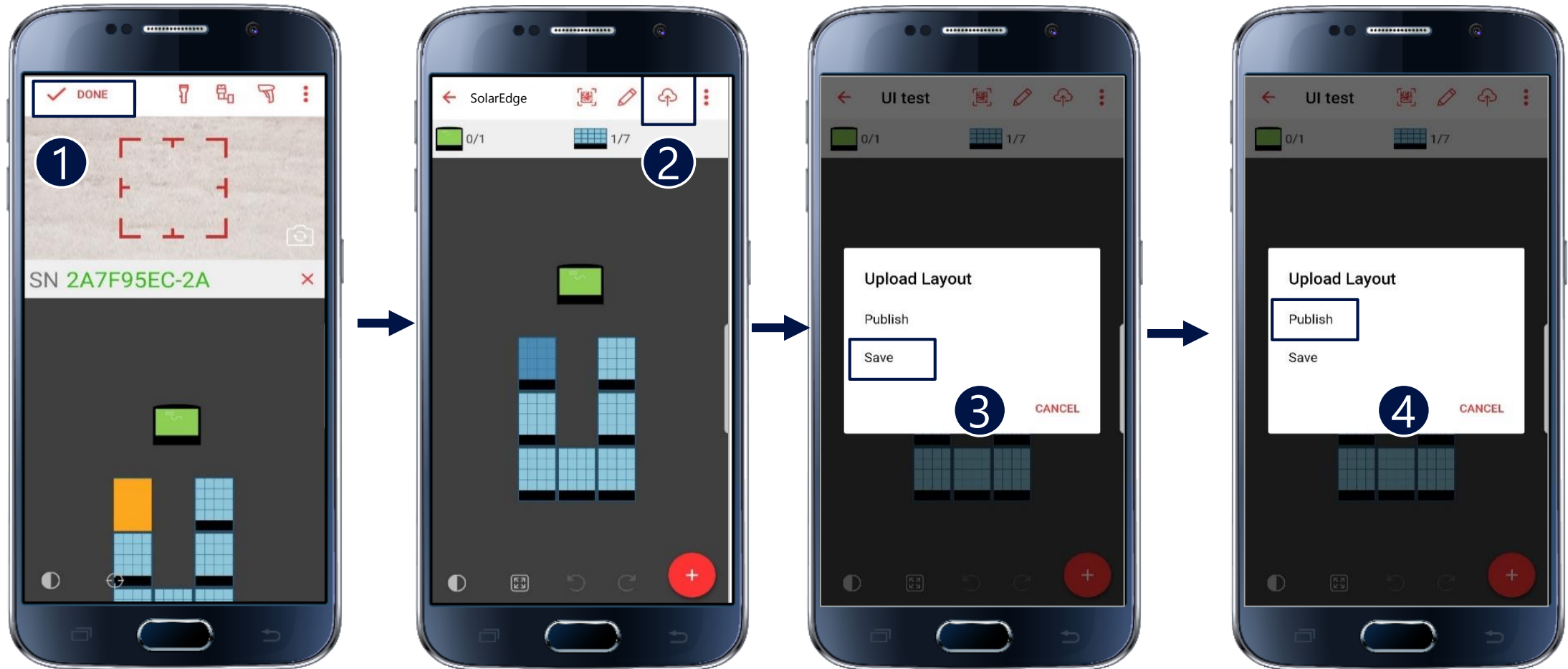
# Saving Your Work



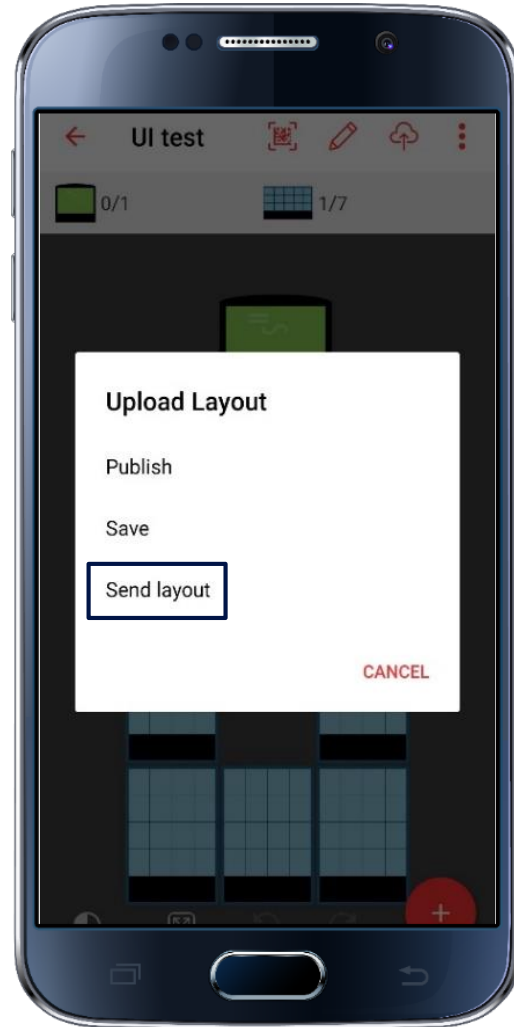
# Saving Your Work



# Publishing Your Work



# Email Your Layout as Backup



# Three Key Takeaways from This Webinar

## 1 One-Stop-Shop

Get more smart energy solutions from one vendor

## 2 Faster and Easier

Integrated with power optimisers, the smart panels enable faster and easier PV installations than before

## 3 Virtual map

The Mapper app provides an efficient, streamlined process for registering the physical layout of new PV sites in the SolarEdge monitoring platform

# Want to Learn More?

## Available training

- ▀ Webinars
- ▀ E-learning courses
- ▀ Seminars





Questions?





# Let Us Know What You Think



<https://www.research.net/r/SKGGHLJ>

**solar**edge

# Thank You!

## Cautionary Note Regarding Market Data & Industry Forecasts

This power point presentation contains market data and industry forecasts from certain third-party sources. This information is based on industry surveys and the preparer's expertise in the industry and there can be no assurance that any such market data is accurate or that any such industry forecasts will be achieved. Although we have not independently verified the accuracy of such market data and industry forecasts, we believe that the market data is reliable and that the industry forecasts are reasonable.

Version #: V.1.0  
11/2018/ENG ROW

solar**edge**